

Unit Two : Recreation and the Environment

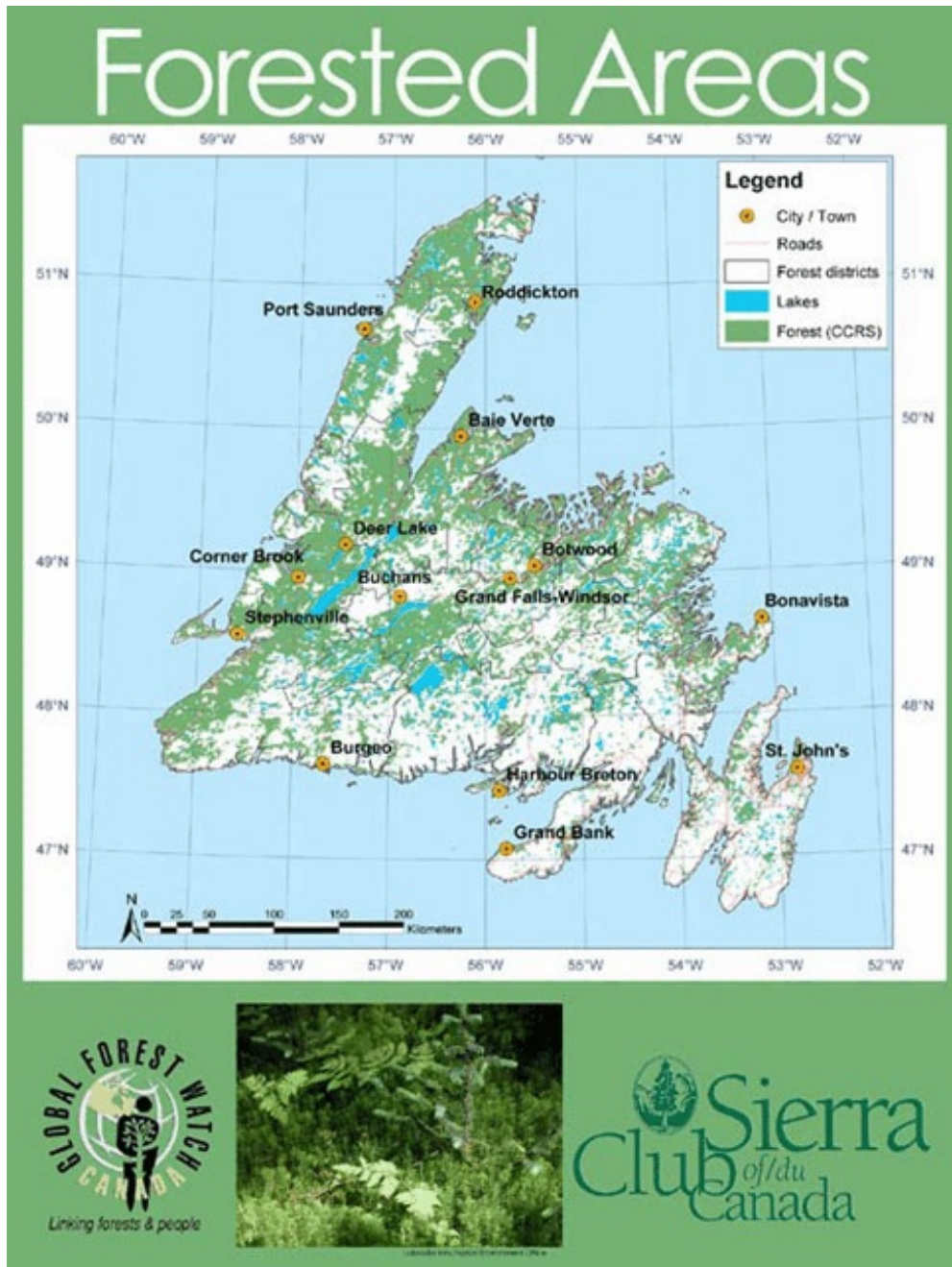
“Wilderness”(Page 155)

The Island part of the Province has very little untouched “wilderness” left. Resource extraction, hydro, roads, and settlements fragment what was once large areas of “wilderness” into pieces.



Central / Southern Newfoundland boasts the most untouched areas, and the Northern Peninsula ranks second.

On top of that, the varied forest types are sparsely dotted across Newfoundland's upper half....



These factors combine to give Newfoundland a set of wildlife species and outdoor activities sometimes very different from those in Labrador.

Ex. Identify three outdoor activities that could easily be done in most of Newfoundland, but would be harder for most Labradorians to do. List these in your notes. What outdoor based activities can Newfoundland offer the world ?

| Newfoundland | Labrador |
|---|--|
| roughly 110 000 km ² 500 000 people | roughly 295 000 km ² 42 000 people |

Labrador still has large areas of virtually untouched forests and water. Our developments are spread out over a much larger area, with only one major road across its middle. Abundant wildlife and clean water make Labrador a world famous “wilderness” destination.

“What Is Wilderness ?”

- depends on who you ask...

- generally, early Aboriginal groups saw the wilderness as a “natural community that they were a blended part of”
- generally, Europeans settlers saw it as a source of resources to be exploited, and it needed to change to suit our needs
- conservationists want to use it sustainably, preservationists want to set it aside and not use it at all

Wilderness Assignment # 1 :

Sit at the back tables in small groups, and each of you make a “paradigm map” of what you consider “wilderness” to be on paper.

Here are a few ideas to get the conversation going...

- what does it contain, or not contain ?
- what does it look and sound like ?
- what does it smell like ?
- what are the different ways people might feel when they are in it ?
- what can or can't you do there ?

